

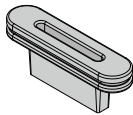


INSTALLATION INSTRUCTIONS '11+ CHARGER BIO SEAT & FLOOR PAN

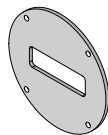


ABS ABS Seat

ABS Floor Pan



(2) Seat Belt Grommets



(2) Seat Pucks



(2) Black Rubber Floor Pan Drain Plugs

Optional SEATBELT EXTENSIONS



Seat Pucks



Seatbelt Extensions

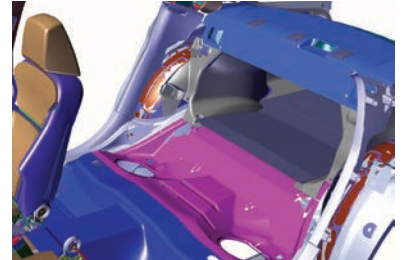


INSTALLATION INSTRUCTIONS

If installing a complete Prisoner Transport package, install Floor Pan and ABS Seat before Vehicle Partition.

1. Lift the front edge of the seat cushion up and pull out of the vehicle. Unbolt the hardware at the bottom of the seatback and use a small flat tool to unlatch the clips from the left and right side that hold the top of the seatback in. Remove the Seat Belt receivers from the vehicle. (Pic 1)

Pic 1



Locate any aftermarket wiring and be certain that you will not be putting any screws through it.

2. Install the ABS floor pan before the seat. Remove the rear seat bolts from both driver and passenger seats. Remove the plastic trim around the bottom of the back doors and loosen the lower B pillar trim.
3. Place the ABS floor pan in the back seat area putting it under the front seat rails and the B pillar trim (Pic 2). Replace the front seat bolts and the door trim tucking floor pan under trim. (Pic 3)
4. Use a 3/4" hole saw to drill through the vehicle floor at the drain holes in the ABS floor pan. Install rubber floor pan drain plugs into holes of the ABS Floor Pan.

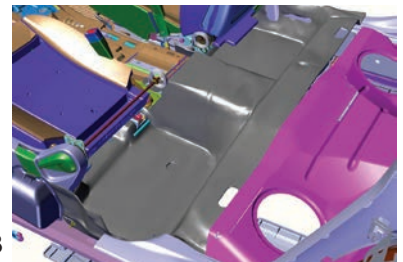
Pic 2



If installing a Center Divider, install the Large Mounting Brackets onto ABS Seat first.

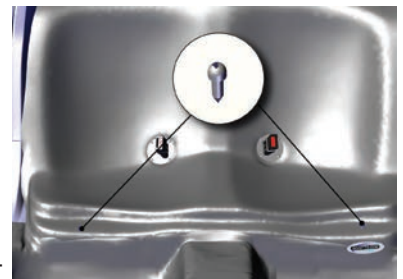
If you ordered Seatbelt Extensions, remove OEM seatbelts. Set aside OEM nuts (See Last Page For Install Instructions)

Pic 3



5. Place ABS seat in vehicle. Push the ABS seat to the rear of the vehicle to fit the lower seat shelf snugly.
6. Drill the 1" hex head tek screws (or square drive tek screws with screw cap covers) into the pre-drilled locations on the front edge of the seat. (Pic 4)
7. Drill the 1" hex head tek screws (or square drive tek screws with screw cap covers) into the top locations of the ABS seat. (Pic 5)

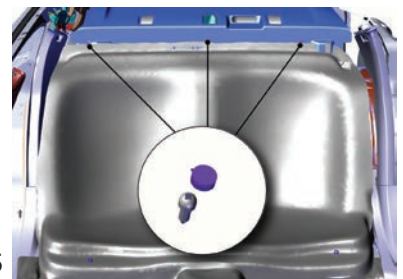
Pic 4



IF YOU PURCHASED SEATBELT EXTENSIONS SKIP TO STEP NINE.

8. Insert metal tab of seat belt receivers through top of provided ABS seat puck then insert into provided rubber grommet. Replace seat belt receivers on studs and tighten to factory spec.

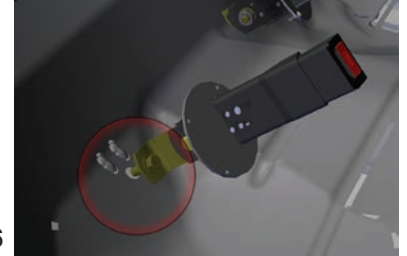
Pic 5



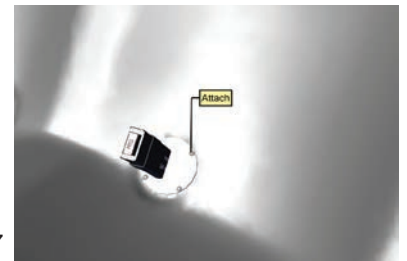


INSTALLATION INSTRUCTIONS

- Using a long socket extension, secure Seatbelt Extender to OEM studs. Re-use OEM nuts. (Pic 6)
- Attach ABS seat pucks to ABS seat by drilling black truss screws into pre-drilled holes in seat pucks. Use of a clear silicone seal around the edge of the ABS seat pucks is recommended. (Pic 8)



Pic 6



Pic 7

